



Access to the 17th & 18th hole via the exit from the 18th hole.

Access to the 1st, 2nd, 3rd, 4th, 5th, 8th & 9th via the road at the side of the 1st hole.
6th and 7th may be reachable depending on ground conditions.

Please ring the bell on 1st and 9th to indicate that you have cleared the landing area

The public footpath which crosses the golf course is used by walkers and runners. Despite signs the walkers and runners are often not aware they are on a golf course so please be aware of members of the public crossing the golf course.

The Car Park has a one way system in place. Please follow the arrows marked on the floor.

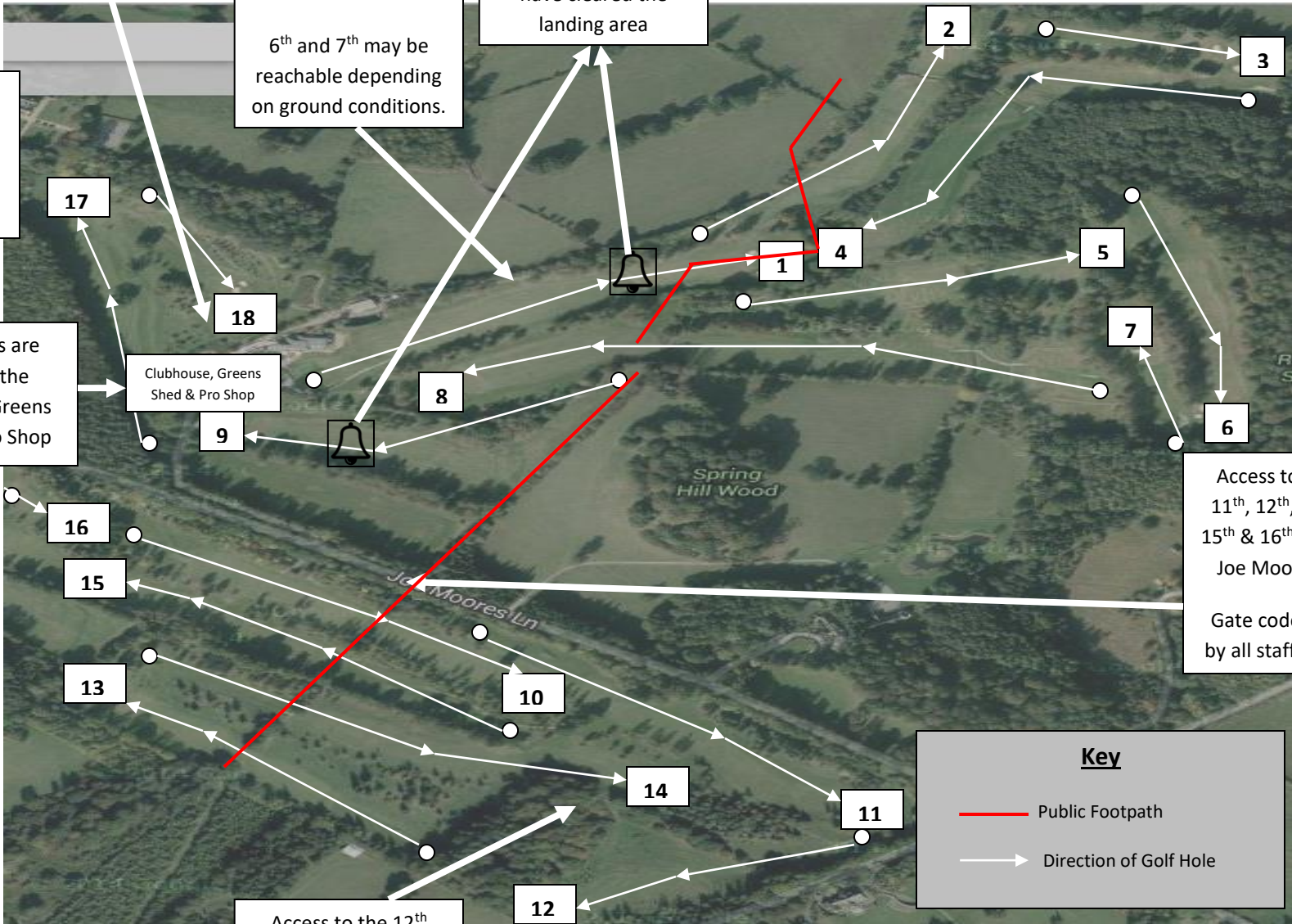
First Aid Kits are located in the Clubhouse, Greens Shed & Pro Shop

Clubhouse, Greens Shed & Pro Shop

Access to the 10th, 11th, 12th, 13th, 14th, 15th & 16th holes from Joe Moore's Lane.
Gate code is known by all staff members.

Access to the 12th hole is via the road way through the 14th woods.

A defibrillator is located in the Entrance Foyer to the Clubhouse. Staff members: Andy Mee, Peter Sellaars, Daniel Sellaars, Emma Woolnough, Alison Leary, Declan Hamilton, Simon Graham & Luke Hutchinson are trained in its use.



Key

- Public Footpath
- Direction of Golf Hole





Lingdale Golf Club

Health & Safety Information

Members & Visitors

01509890703

clubmanager@lingdalegolfclub.co.uk

On The Course



Please be aware of slip and trip hazards around the course e.g. grassy banks, slopes, bridges, sleeper steps and holes left by burrowing animals.



Please take care when searching for or retrieving golf balls in or around the ponds on the 4th, 5th and 13th.



Hazardous substances are occasionally applied to the course. During these times appropriate signage will be displayed on the 1st tee.



Access to the Greens Shed is strictly prohibited.



Suspension of play due to adverse weather (e.g. lightning) will be signalled by a prolonged blast of the siren from the Pro Shop.



Greens staff have priority on the golf course at all time. Please do not play whilst any greens staff are in range.

Golfing Etiquette



If you hit your golf ball towards places where other golfers might be playing always shout 'fore'.



Remember to always repair any pitch marks on the greens, replace divots and rake bunkers.

Dress Code



Appropriate golf clothing must always be worn whilst playing golf and appropriate spiked or dimpled shoes must be worn.



If you or a playing partner have an accident whilst in the clubhouse or on the course report the accident to the Club Manager or a member of the Bar Staff who will complete an accident report form.

In and Around The Clubhouse



Smart casual clothing is acceptable in the clubhouse as are denim trousers. Golf shoes are not acceptable nor are dirty, wet and soiled clothing.



When driving in the car park always observe the 10mph speed limit. Always park in the marked bays and do not park in the disabled bays unless authorised to do so.



Smoking is prohibited within all buildings. If you want to smoke please use the designated area and ensure all material is extinguished properly and deposited in the bins provided.

Emergencies



If the fire alarm sounds please follow the exits signs and congregate at the Assembly Point in the Car Park.



If you or playing partner become unwell or require first aid please contact the clubhouse on 01509 890703 or ring 999 for emergency services.